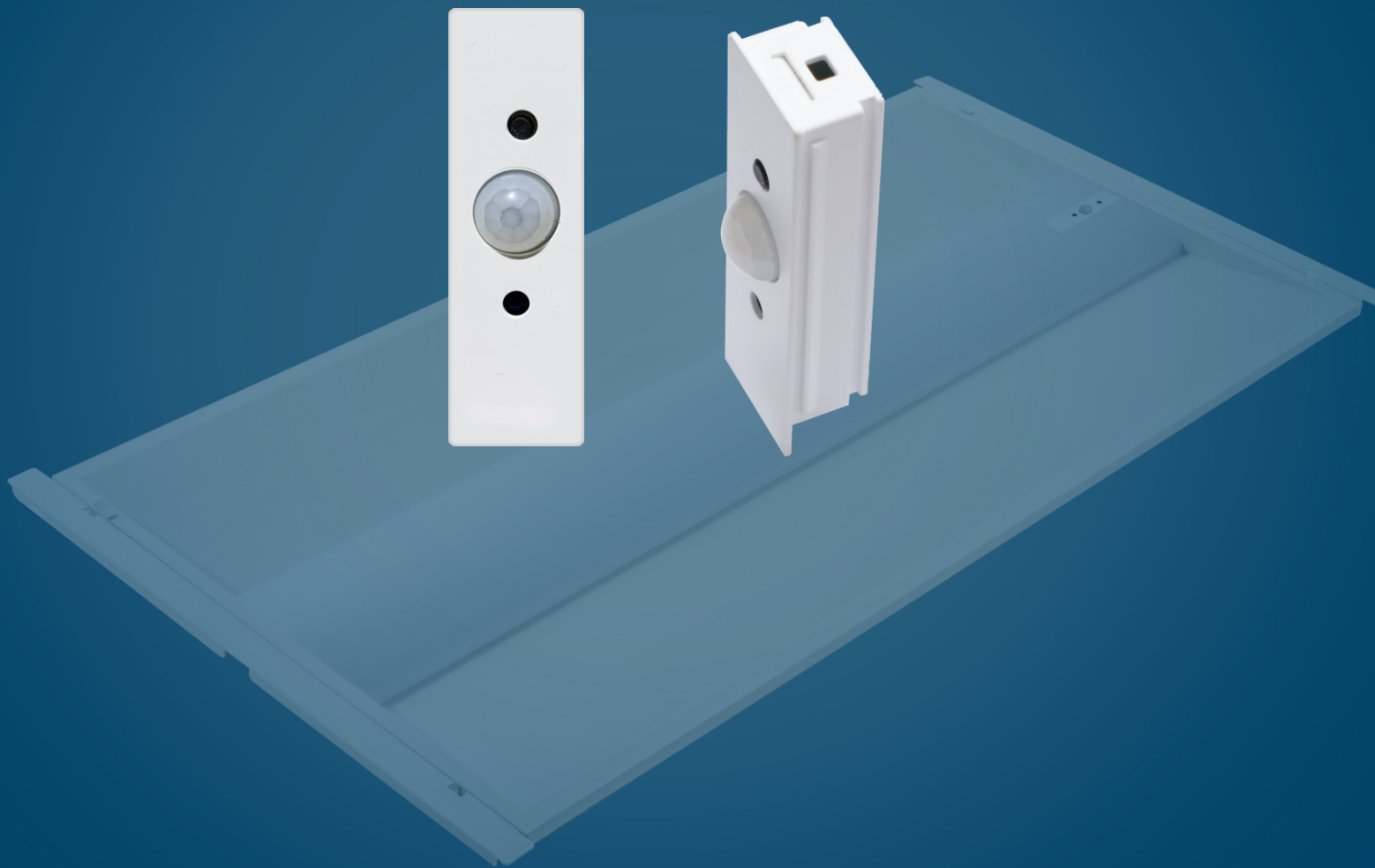


TIOSL



LED PIR Fixture Mounted Smart Controller

DC lighting controller

TL-SF-BPRN-MN-12-02

Product Range

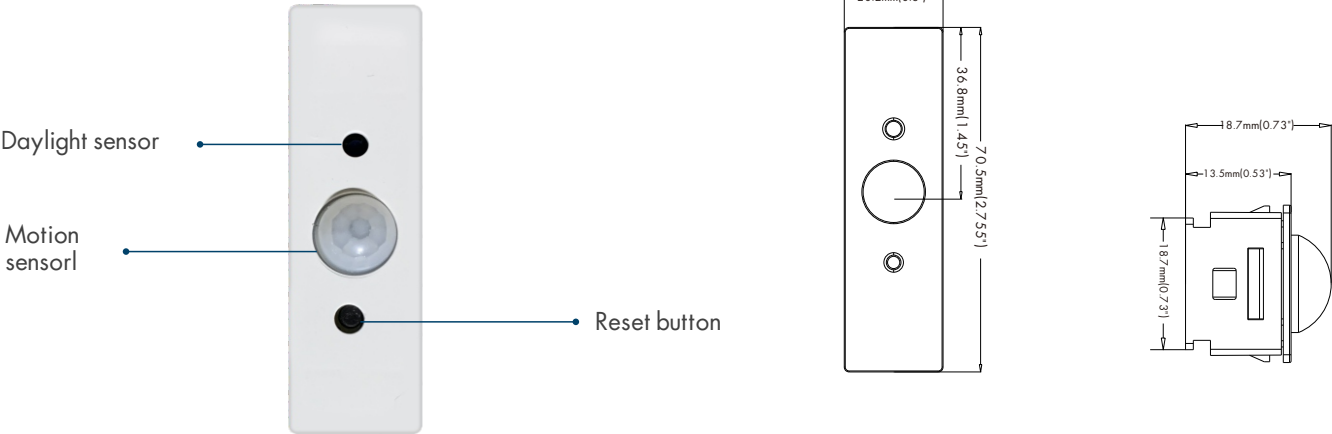
Part No.	Input voltage	Operating current	Communication protocol	Communication frequency	Photosensitive range	Operating temperature
TL-SF-BPRN-MN-12-02	DC12V	100mA (max)	Bluetooth Mesh	2405-2480MHz	10-1000Lux	-20~+60°C

Max. lauch power	Rx sensitivity	Max. communication distance	Mounting height	IP rating
8dBm	-92dB	50m(164ft)	<4m(13ft) (Open environment)	IP20

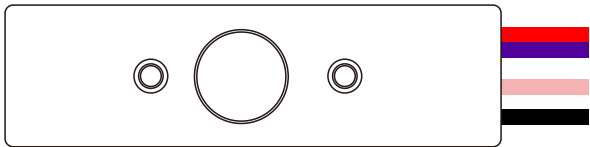
Features

- Compact linear wireless BLE mesh smart sensor
- Integrated with PIR motion & daylight sensor
- Single-channel 0-10V dimmable
- With reset button for quick resetting

Size



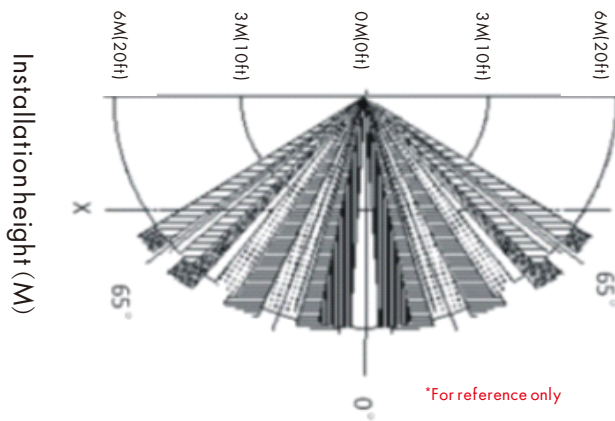
Wiring



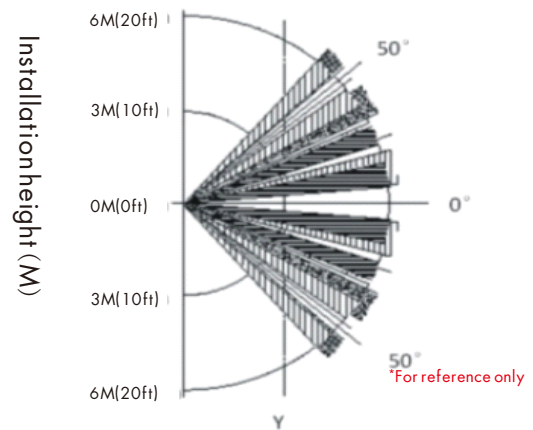
- Red: 12V
- Purple: DIM+
- Pink: GND/DIM-
- White: Emergency+(selected)
- Black: Emergency-(selected)

Sensor detection angle

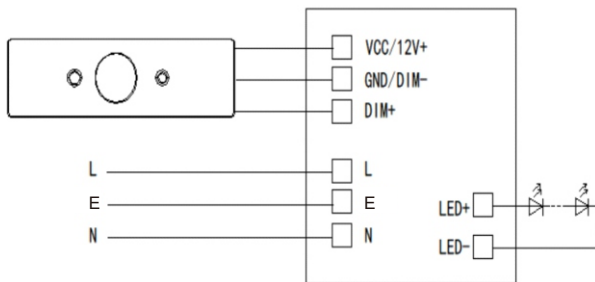
Contest installation detection range map



Wall installation detection range map



Wiring diagram



Wiring diagram



TL-SF-BPRN-MN-12-02

Application

- LED Troffer Light
- Magnetic led retrofit strip kit
- LED batten light

Installation Precautions:

1. Before installing the Bluetooth module, first turn off the circuit breaker switch at the power supply.
2. Do not enable the installation of large-scale metal blocking positive lamps and places

Precautions

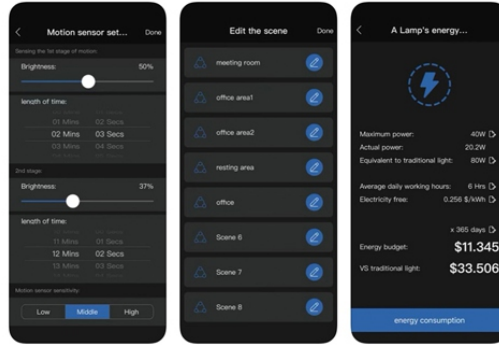
1. We reserve the necessary text and image technical parameters correction rights
2. Without license or authorization, it is not allowed to disassemble and other people as damage, otherwise the contractual provisions guaranteed immediate failure
- 3, the product should not be installed in a place where the air is suddenly changed, such as air conditioning air outlet, wind direction rotation, etc.

APP "SLS"

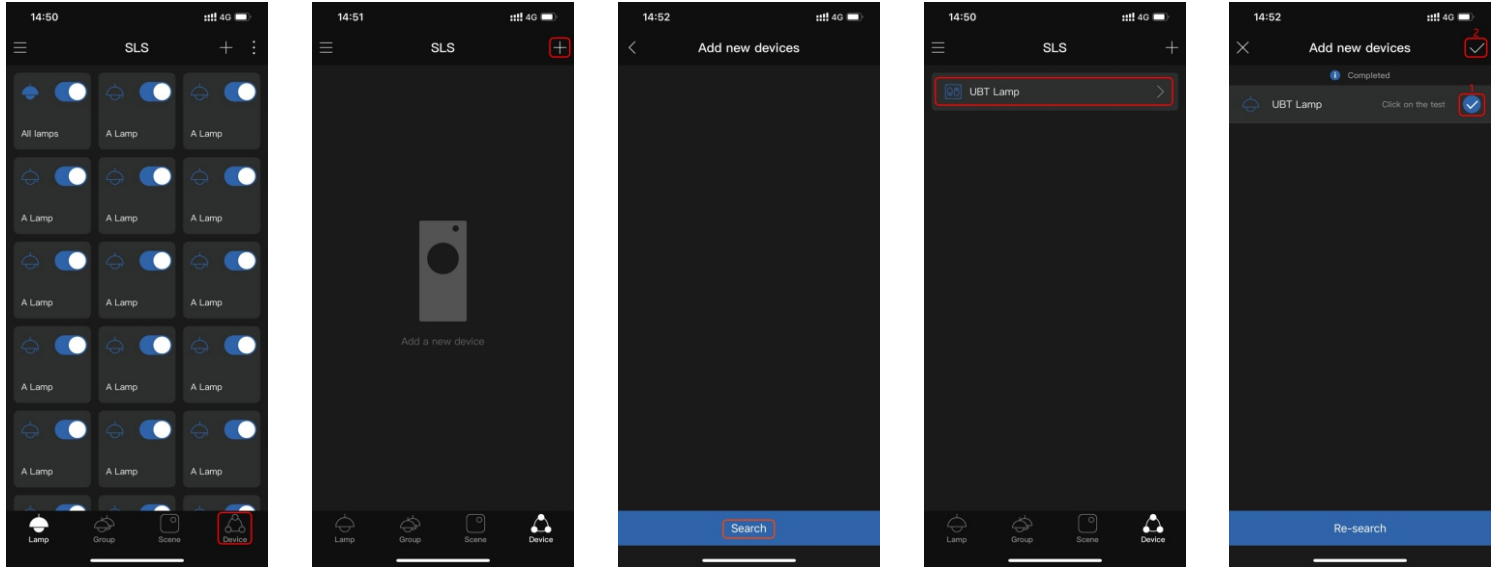


SL solutions
Smart Lighting Solution

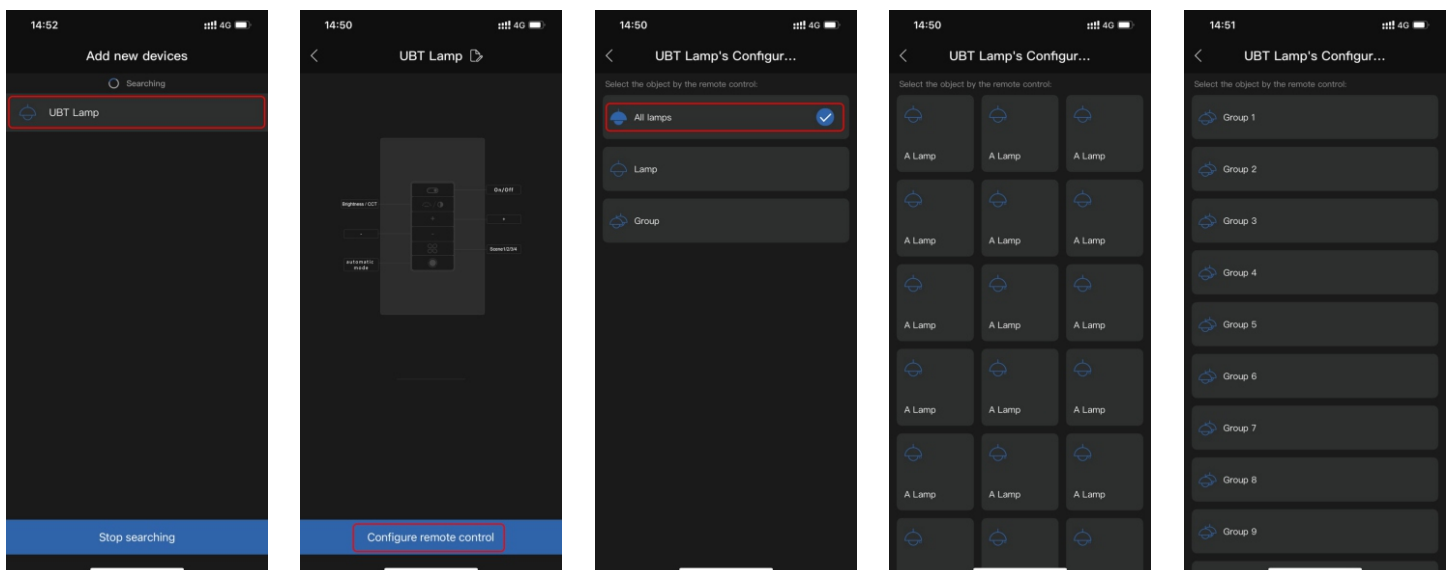
OPEN



Add sensor



- 1-Click "device"
- 2-Click "add device"
- 3-Click "search"
- 4- Click to stop searching after searching out the device
- 5- After stopping the search, select the device that needs to be added



- 6- Click on the added device to enter the configuration page
- 7-Enter the binding device page
- 8-Select the device to be bound, which can support binding group, all devices, or single light
- 9-Bind a single device page,
- 10-Bind group page